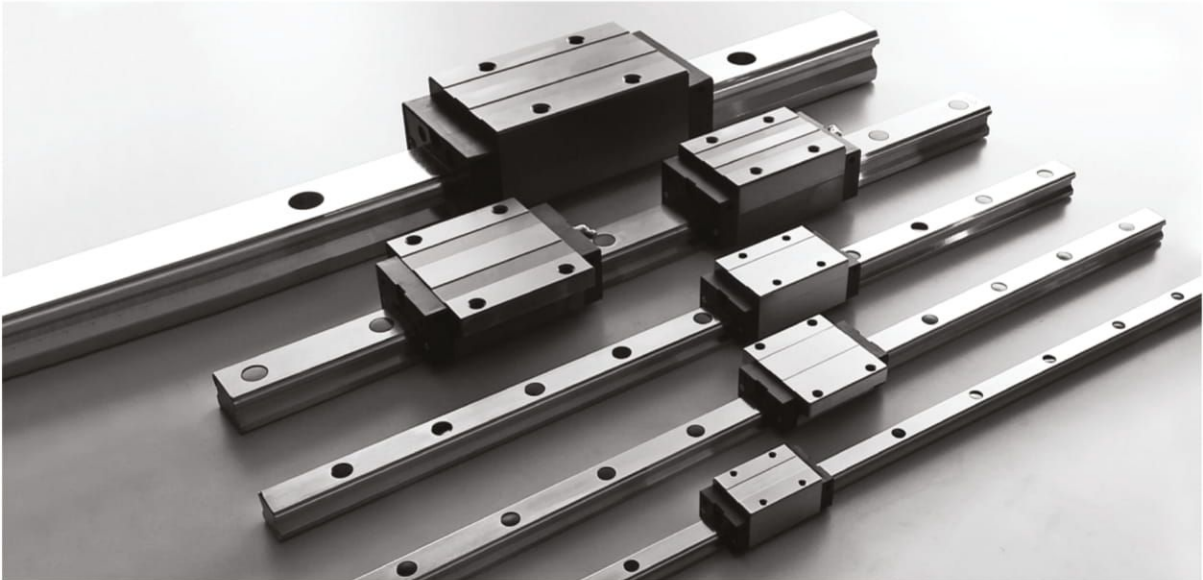
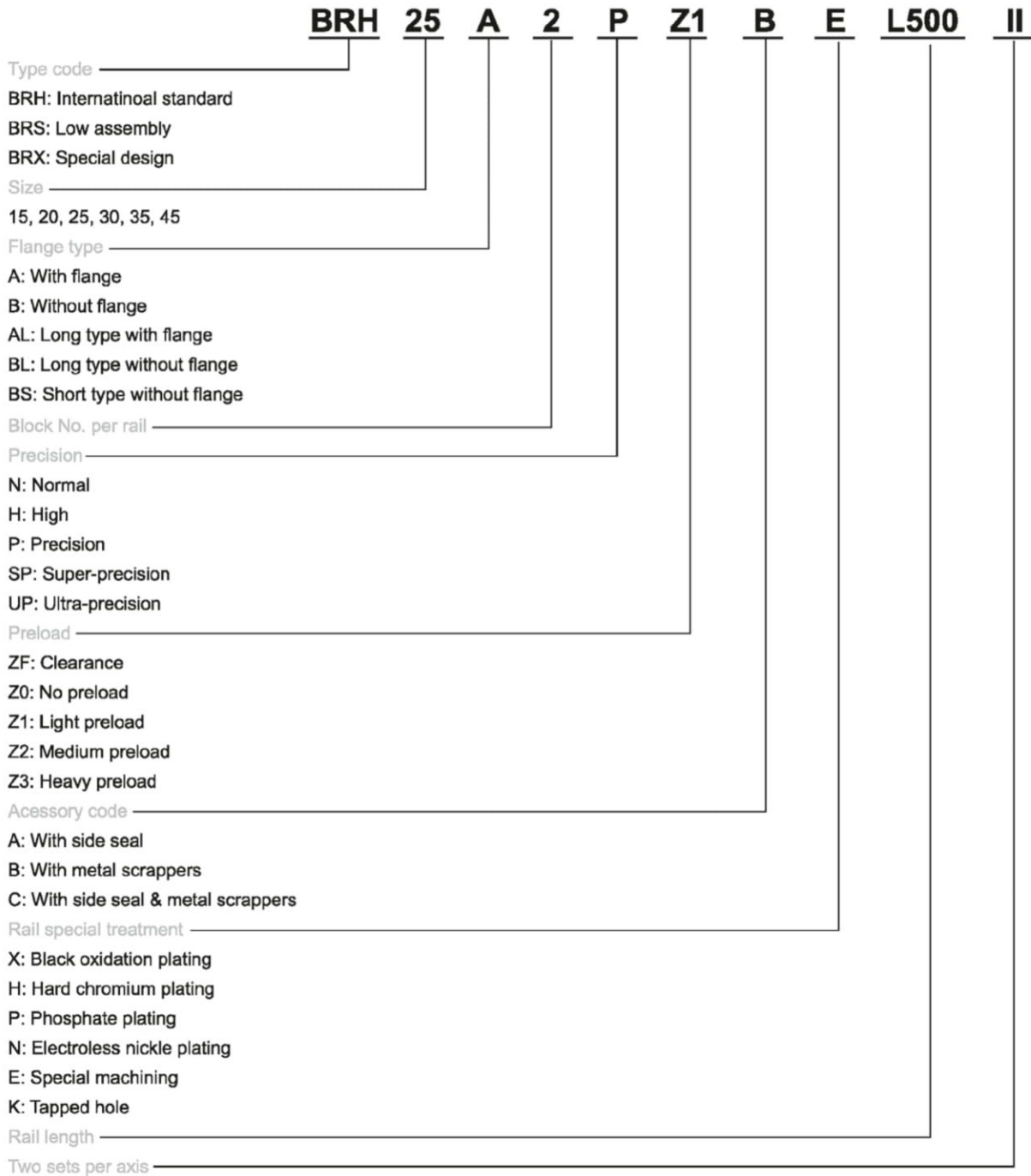


# Linear Guide





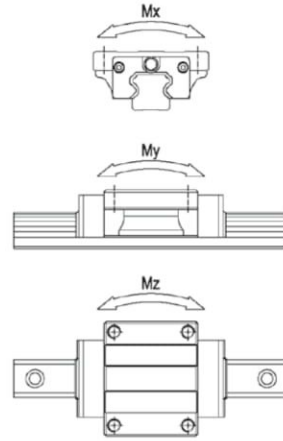
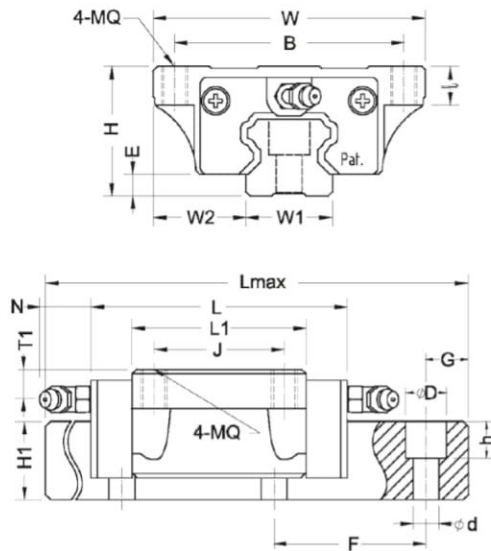
## The Model Code of BR Series



Note: BR35 and BR45 are not equipped with self-lubricant parts.

# Linear Guide

# Model: BRH-A/AL

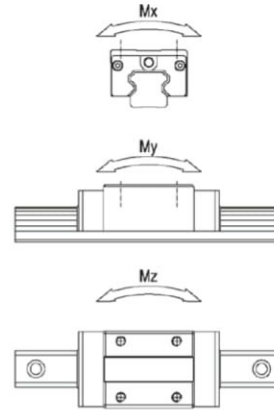
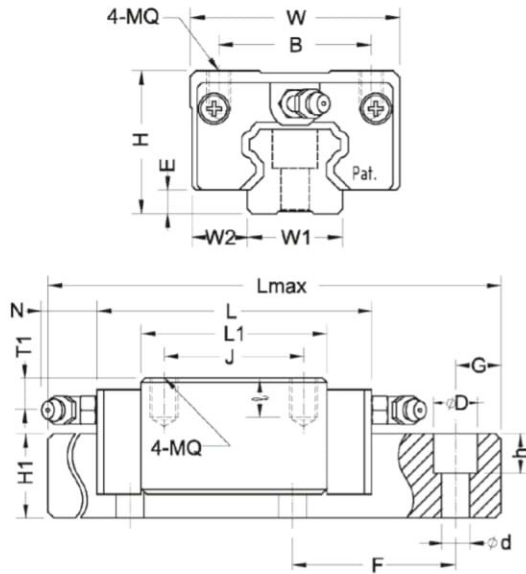


Model No.	Assembly (mm)					BR block (mm)						BR rail (mm)			
	H	W	W2	E	L	BxJ	MQx	L1	Oil hole	T1	(N)	W1	H1	F	dxDxh
BRH15A	24	47	16	4.6	62	38x30	M5x8	40	Φ 3	4.3	5	15	14	60	4.5x7.5x5.3
BRH20A	30	63	21.5	5	72	53x40	M6x9	50	M6x1	7	15.6	20	18	60	6x9.5x8.5
BRH20AL					84			63.4							
BRH25A	36	70	23.5	7	85	57x45	M8x12	57	M6x1	7.8	15.6	23	22	60	7x11x9
BRH25AL					107			79.1							
BRH30A	42	90	31	9	103	72x52	M10x12	72	M6x1	7	15.6	28	26	80	9x14x12
BRH30AL					125			94.3							
BRH35A	48	100	33	9.5	120	82x62	M10x13	80	M6x1	8	15.6	34	29	80	9x14x12
BRH35AL					146			105.8							
BRH45A	60	120	37.5	14	133	100x80	M12x15	95	M8x1	8.5	16	45	38	105	14x20x17
BRH45AL					168			129.8							

Model No.	Ref.Data (mm)		Basic Load Rating (Kgf)		Static Moment (Kgf*m)			Weight	
	Lmax	G	(C)	(CO)	Mx	My	Mz	Block(Kg)	Rail(Kg/m)
BRH15A	4000	20	850	1350	10.1	6.8	6.8	0.21	1.4
BRH20A	4000	20	1400	2400	24	14.6	14.6	0.4	2.6
BRH20AL			1650	3000	30	23.8	23.8		
BRH25A	4000	20	1950	3200	36.8	22.8	22.8	0.57	3.6
BRH25AL			2600	4600	52.9	45.5	45.5		
BRH30A	4000	20	2850	4800	67.2	43.2	43.2	1.1	5.2
BRH30AL			3600	6400	89.6	75.4	75.4		
BRH35A	4000	20	3850	6200	105.4	62	62	1.6	7.2
BRH35AL			4800	8300	141.1	109.8	109.8		
BRH45A	4000	22.5	6500	10500	236.3	137.8	137.8	2.7	12.3
BRH45AL			7700	13000	292.5	210.9	210.9		

## Linear Guide

## Model: BRH-B/BL

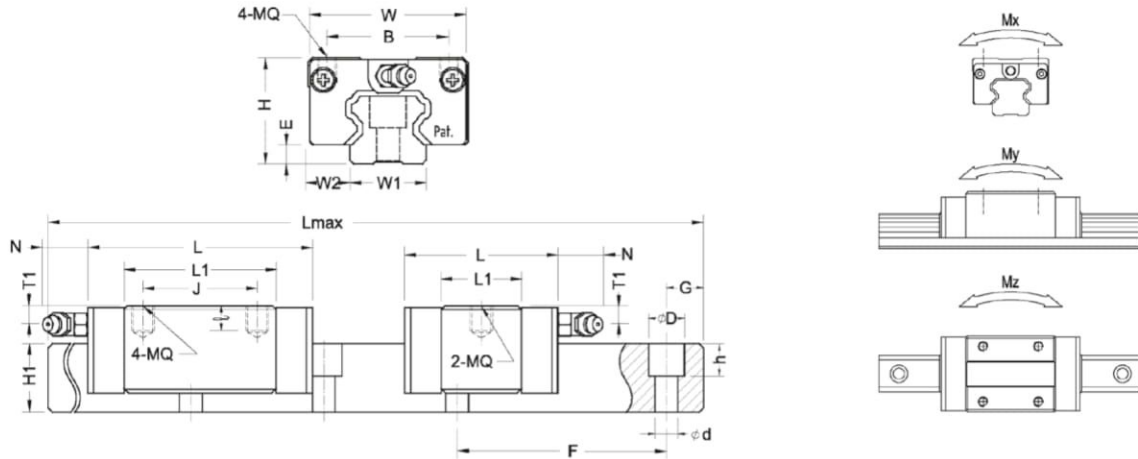


Model No.	Assembly (mm)				BR block (mm)						BR rail (mm)				
	H	W	W2	E	L	BxJ	MQx	L1	Oil hole	T1	(N)	W1	H1	F	dxDxh
BRH15B	28	34	9.5	4.6	62	26x26	M4x6	40	Φ3	8.3	5	15	14	60	4.5x7.5x5.3
BRH20B	30	44	12	5	72	32x36	M5x8	48.8	M6x1	7	15.6	20	18	60	6x9.5x8.5
BRH20BL					90	32x50		63.4							
BRH25B	40	48	12.5	7	85	35x35	M6x10	57	M6x1	11.8	15.6	23	22	60	7x11x9
BRH25BL					108	35x50		79.1							
BRH30B	45	60	16	9	103	40x40	M8x13	72	M6x1	10	15.6	28	26	80	9x14x12
BRH30BL					125	40x60		94.3							
BRH35B	55	70	18	9.5	120	50x50	M8x13	80	M6x1	15	15.6	34	29	80	9x14x12
BRH35BL					146	50x72		105.8							
BRH45B	70	86	20.5	14	134	60x60	M10x16.5	95	M8x1	18.5	16	45	38	105	14x20x17
BRH45BL					168	60x80		129.8							

Model No.	Ref.Data (mm)		Basic Load Rating (Kgf)		Static Moment (Kgf*m)			Weight	
	Lmax	G	(C)	(CO)	Mx	My	Mz	Block(Kg)	Rail(Kg/m)
BRH15B	4000	20	850	1350	10.1	6.8	6.8	0.19	1.4
BRH20B	4000	20	1400	2400	24	14.6	14.6	0.31	2.6
BRH20BL			1650	3000	30	23.8	23.8		
BRH25B	4000	20	1950	3200	36.8	22.8	22.8	0.45	3.6
BRH25BL			2600	4600	52.9	45.5	45.5		
BRH30B	4000	20	2850	4800	67.2	43.2	43.2	0.91	5.2
BRH30BL			3600	6400	89.6	75.4	75.4		
BRH35B	4000	20	3850	6200	105.4	62	62	1.5	7.2
BRH35BL			4800	8300	141.1	109.8	109.8		
BRH45B	4000	22.5	6500	10500	236.3	137.8	137.8	2.3	12.3
BRH45BL			7700	13000	292.5	210.9	210.9		

# Linear Guide

# Model: BRS-B/BS



Model No.	Assembly (mm)				BR block (mm)							BR rail (mm)			
	H	W	W2	E	L	BxJ	MQx	L1	Oil hole	T1	(N)	W1	H1	F	dxDxh
BRS15B	24	34	9.5	4.6	62	26x26	M4x5.6	40	Φ3	4.3	5	15	14	60	4.5x7.5x5.3
BRS15BS					42	26x-		21.6							
BRS20B	28	42	11	5	75	32x32	M5x604	48.8	M6x1	5	15.6	20	18	60	6x9.5x8.5
BRS20BS					55	32x-		28							
BRS25B	33	48	12.5	7	85	35x35	M6x8	57	M6x1	4.8	15.6	23	22	60	7x11x9
BRS25BS					59	35x-		31.5							
BRS30B	42	60	16	9	103	40x40	M8x11.5	72	M6x1	7	15.6	28	26	80	9x14x12
BRS30BS					69	40x-		38.6							
<b>BRS35B</b>	48	70	18	9.5	120	50x50	M8x11.2	80	M6x1	8	15.6	34	29	80	9x14x12
<b>BRS35BS</b>					75	50x-		45.7							
BRS45B	60	86	20.5	14	133	60x60	M10x13	95	M8x1	8.5	16	45	38	105	14x20x17

Model No.	Ref.Data (mm)		Basic Load Rating (Kgf)		Static Moment (Kgf*m)			Weight	
	Lmax	G	(C)	(CO)	Mx	My	Mz	Block(Kg)	Rail(Kg/m)
BRS15B	4000	20	850	1350	10.1	6.8	6.8	0.17	1.4
BRS15BS			520	680	5.1	1.8	1.8	0.1	
BRS20B	4000	20	1400	2400	24	14.6	14.6	0.26	2.6
BRS20BS			950	1400	7	4.9	4.9	0.17	
BRS25B	4000	20	1950	3200	36.8	22.8	22.8	0.38	3.6
BRS25BS			1250	1750	17.5	6.9	6.9	0.21	
BRS30B	4000	20	2850	4800	67.2	43.2	43.2	0.81	5.2
BRS30BS			1750	2400	33.6	11.6	11.6	0.48	
BRS35B	4000	20	3850	6200	105.4	62	62	1.2	7.2
BRS35BS			2500	3650	62.1	20.9	20.9	0.8	
BRS45B	4000	22.5	6500	10500	236.3	137.8	137.8	2.1	12.3